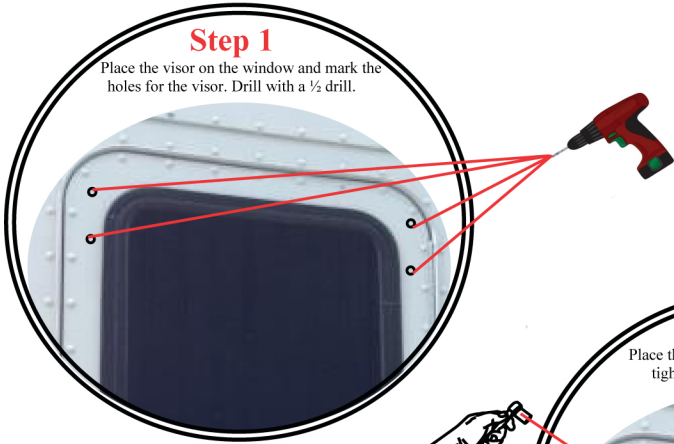


Installation Guide for X32027

Step 1

Place the visor on the window and mark the holes for the visor. Drill with a 1/8" drill.



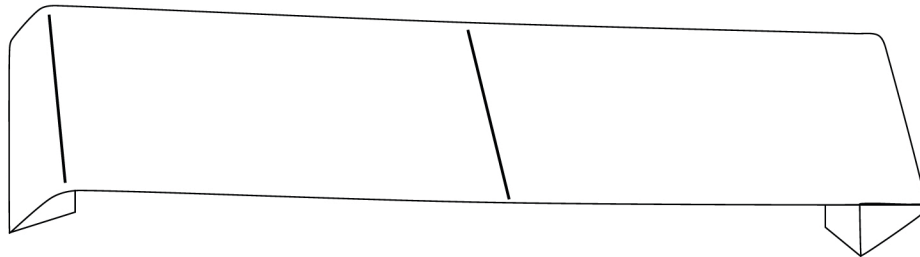
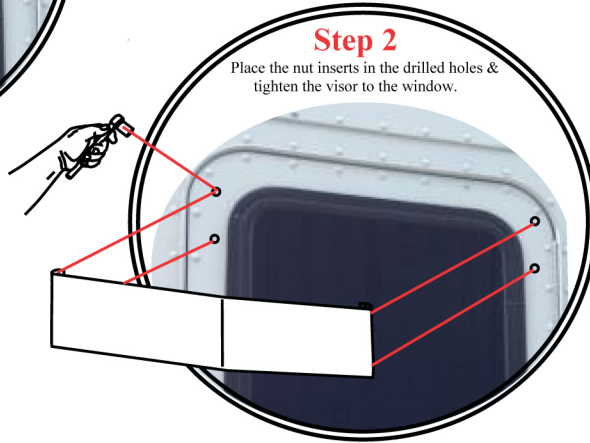
Step 3

You are done. Remove the plastic & clean with windex.



Step 2




Place the nut inserts in the drilled holes & tighten the visor to the window.



Notes

- Use silicone or something similar to patch any exposed holes once installation is completed.
- Drill cautiously to avoid puncturing the cabs interior.

Bolt Kit

	QTY: 4	Hex Head	1/4 - 20 x 1 1/4
	QTY: 4	Flat Washer	1/4 x 5/8
	QTY: 4	Weld Nut	1/4 - 20 x 1"



www.GrandGeneral.com