



(A LIVERNE Company)

1200 E. Birch St.

Brandon, SD 57005

MODEL # 205740

## INTERNATIONAL DURASTAR (2007-CURRENT)

### INSTALLATION INSTRUCTIONS

**READ THE INSTRUCTIONS COMPLETELY AND CHECK TO MAKE SURE THAT ALL OF THE REQUIRED PARTS ARE ON HAND BEFORE STARTING THE INSTALLATION.**

1. LOOSEN AND REMOVE THE BOLTS FROM ONE SIDE OF THE FACTORY BUMPER.
2. INSTALL THE UPPER MOUNTING BRACKET (ITEM #3 OR #4), USING THE M12 X 55mm HEX BOLTS (ITEM #14), 1/2" FLAT WASHERS (ITEM #16), AND M12 SERRATED FLANGE NUTS (ITEM #8) AS SHOWN IN FIG. 1. HAND TIGHTEN ONLY AT THIS TIME, TO BE ADJUSTED LATER.
3. INSTALL THE LOWER MOUNTING BRACKET (ITEM #5 OR #6), USING THE M12 X 55mm HEX BOLTS (ITEM #14), 1/2" FLAT WASHERS (ITEM #16), AND M12 SERRATED FLANGE NUTS (ITEM #8) AS SHOWN IN (FIG. 1). HAND TIGHTEN ONLY AT THIS TIME, TO BE ADJUSTED LATER. (1) 1/2" HOLE TO BE DRILLED ON EACH LOWER BRACKET AS SHOWN IN (FIG. 2).
4. REPEAT STEPS 1 THRU 3 FOR OPPOSITE SIDE.
5. INSTALL THE GUARD (ITEM #1) ONTO THE MOUNTING BRACKETS AND FASTEN WITH 5/8-11 X 2" HEX BOLTS (ITEM #13), 9/16" FLAT WASHERS (ITEM #4), 5/8" NYLON WASHERS (ITEM #15) AND 5/8-11 NYLOCK NUTS (ITEM #9).
6. SECURE THE TOP OF THE GUARD TO THE TOP MOUNTING BRACKETS WITH THE CLEVIS PINS (ITEM #10) AND THE HAIR PINS (ITEM #11).
7. SNUG UP THE 5/8-11 NYLOCK NUTS SO THAT THE GUARD IS SNUG BUT WILL STILL ROTATE EASILY WHEN LOWERING THE GUARD TO OPEN THE HOOD. CHECK THAT THE GUARD IS CENTERED ON THE BUMPER AND THE MOUNTING BRACKETS ARE STRAIGHT UP AND DOWN. THEN TIGHTEN THE M12 X 1.75 HEX BOLTS SECURING THE MOUNTING BRACKETS TO THE BUMPER. TIGHTEN TO 75 FOOT-POUNDS OF TORQUE.
8. INSTALL THE 1/2-13 X 1" HEX BOLTS (ITEM #12) AND THE 1/2-13 NYLOCK NUTS (ITEM #7) THAT ARE USED AS STOPS WHEN LOWERING THE GUARD. ALIGN A FLAT SIDE OF THE BOLT HEAD WITH THE FLAT SURFACE OF THE MOUNTING TAB ON THE GUARD AND TIGHTEN THE NUT.



(A LIVERNE Company)

1200 E. Birch St.

Brandon, SD 57005

## INTERNATIONAL DURASTAR (2007-CURRENT)

### SERVICE PARTS LIST

ITEM	PART NO.	QTY	DESCRIPTION
1	205500	1	GUARD – TUBULAR, 3” SST
	205501		GUARD – TUBULAR, 3” BLACK
2	102500	4	INSERT – FINISH, BLACK, 3”
3	205742	1	MOUNTING BRACKET – RH/LH, UPPER, ZP
4	100140	4	WASHER – FLAT, 9/16, USS, ZP
5	205746	1	MOUNTING BRACKET – LH, LOWER, ZP
6	205748	1	MOUNTING BRACKET – RH, LOWER, ZP
7	105654	2	NUT – NYLOCK, 1/2-13, ZP
8	100794	6	NUT – SERRATED FLANGE, M12, BZP
9	107435	2	NUT – NYLOCK, 5/8-11, ZP
10	107438	2	PIN – CLEVIS, 5/8 X 2
11	100159	2	PIN – HAIR , 9GA.,
12	100085	2	SCREW – HEX HEAD, 1/2-13 X 1, ZP
13	100144	2	SCREW – HEX HEAD, 5/8-12 X 2, ZP
14	105107	6	SCREW – HEX HEAD, M12 X 55mm, ZP
15	102149	4	WASHER – NYLON, 1 OD X 5/8 ID X 1/32
16	104995	6	WASHER – FLAT, 1/2, SAE, SST

SERVICE PARTS DRAWING

MODEL NO. - 205740

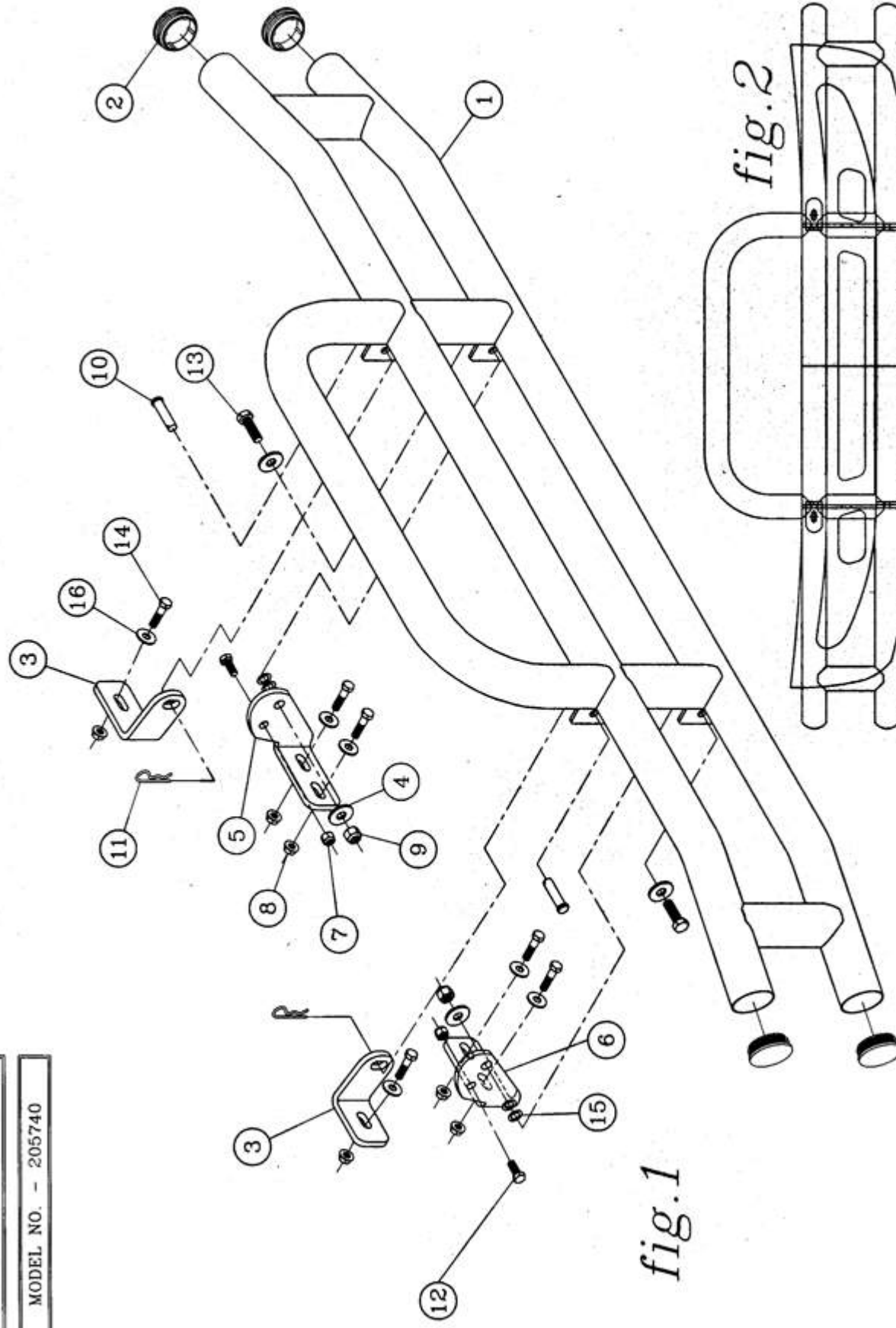
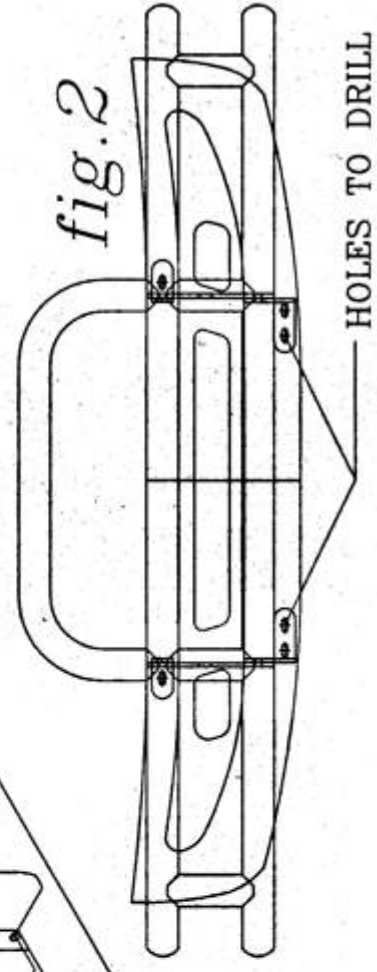


fig.1



**LIVERNE**  
TRUCK EQUIPMENT  
(A LIVERNE Company)

1200 E. Birch St.  
Brandon, SD 57005