

## INSTALLATION INSTRUCTIONS

- 1- TEMPORARILY ATTACH BRACKETS TO THE BACKSIDE OF THE DEFLECTOR WITH HARDWARE AS ILLUSTRATED.
- 2- POSITION THE DEFLECTOR ON HOOD. BE SURE THAT THE DEFLECTOR IS INSERTED BETWEEN THE HOOD AND THE GRILL.
- 3- MARK BRACKET HOLES ON HOOD.

**ATTENTION**

**DO NOT MARK SIDE HOLES, IT WILL BE DONE IN A FURTHER STEP.**

**CAUTION**

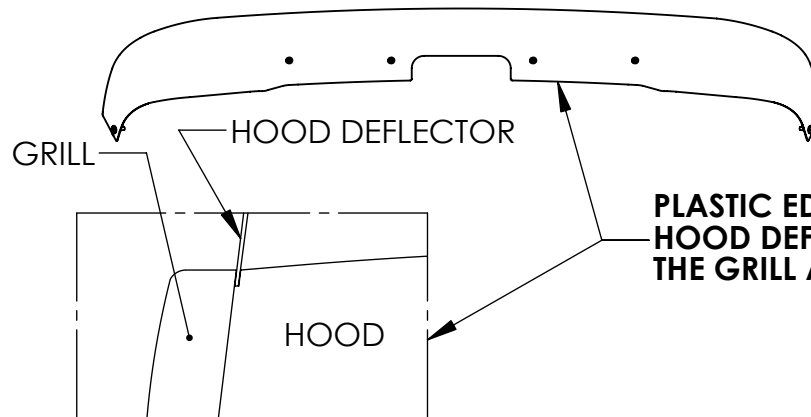
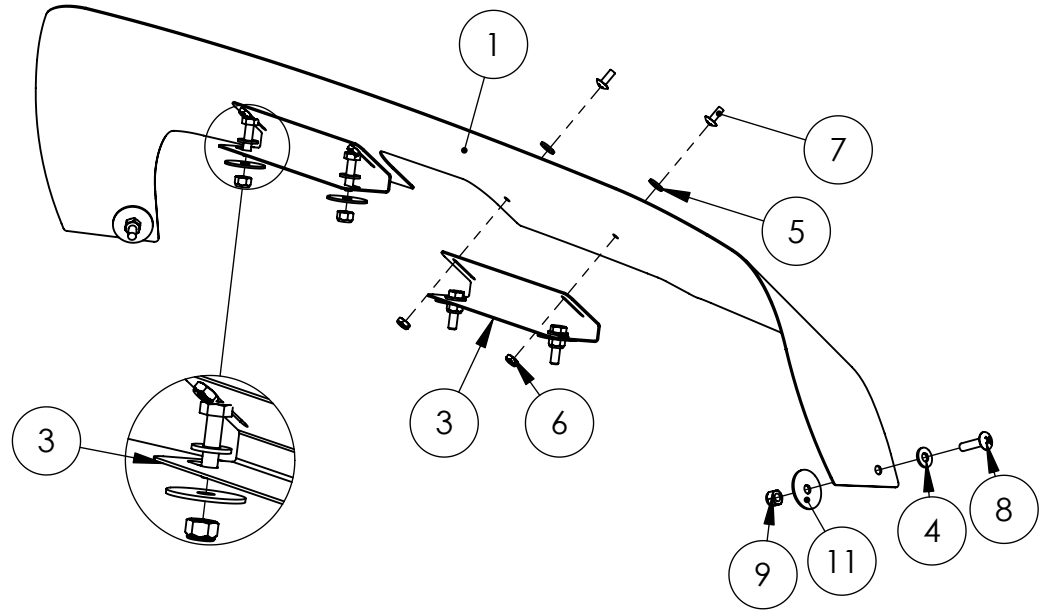
**REMOVE THE HOOD DEFLECTOR TO PREVENT DAMAGE**

- 4- DRILL HOLES AS MARKED AT 9/32" (028125") DIA.
- 5- TEMPORARILY INSTALL THE DEFLECTOR AS ILLUSTRATED.
- 6 PRESS SIDES OF THE DEFLECTOR ONTO THE HOOD AND MARK SIDE HOLES.

**CAUTION**

**REMOVE THE HOOD DEFLECTOR TO PREVENT DAMAGE**

- 7- DRILL SIDE HOLES AT 9/32" (.28125") DIA.
- 8- INSTALL THE DEFLECTOR WITH HARDWARE AS ILLUSTRATED.
- 9- TIGHTEN ALL SCREWS AND BOLTS.



**PLASTIC EDGE TRIM NOT REQUIRED,  
HOOD DEFLECTOR IS INSERT BETWEEN  
THE GRILL AND THE HOOD.**

ITEM NO.	PART NUMBER	DESCRIPTION	QTY
1	M7321021SC	HOOD DEFLECTOR	1
2	K7321021BH	HARDWARE KIT INCLUDE:	-
3	-	PR54DEG	2
4	B-W14S	FLAT WASHER 1/4"	6
5	B-W10OD12S	FLAT WASHER ID#10 X OD 1/2" SS	4
6	B-NL10-32S	NYLON LOCK NUT #10-32NF SS	4
7	B-TP10-32X12S	TRUSS PHILIPS #10-32NFX1/2" SS	4
8	B-TP14-20 X 1S	TRUSS PHILIPS 1/4-20NC X 1	2
9	B-NL14-20S	NYLON LOCK NUT, 1/4-20 UNC	6
10	B-HB14-20X1S	HEX. BOLT 1/4NC X 1	4
11	B-FW14OD114S	FENDER WASHER 1/4"OD1 1/4"SS	6

## TRUX ACCESSORIES

TITLE:  
HOOD DEFLECTOR  
FREIGHTLINER CASCADIA 08 & UP

SIZE DWG. NO.  
**A THOD-FLCAS**

NAME	DATE	REV	DATE
DRAWN BY P.W.	18-11-2008	PH1	-
SCALE: 1:6		WEIGHT: LBS	SHEET: 1 OF 1